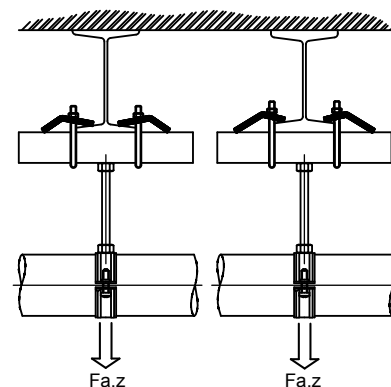


BIS RapidRail® Beam Clamp

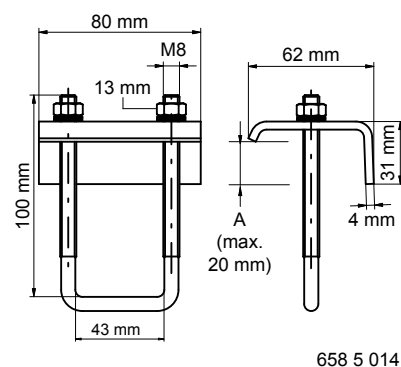
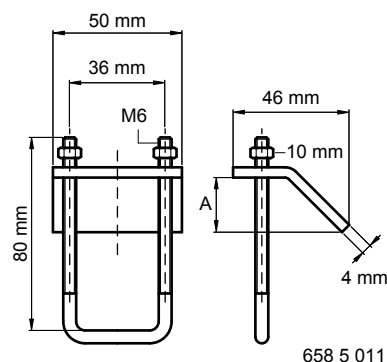
fixing to steel beam



Features and benefits

- for a solid fixing to steel constructions
- material: steel
- without welding or drilling
- zinc plated
- always use 2 beam clamps per fixing
- suitable for WMO, 1, 15, 2, 30

Part No.	A (mm)	For Rail	Fa,z (N)	Pack 1
658 5 011	< 16	WMO - 30	4.500	50
658 5 014	< 20	WM35	3.300	50



Complementary
BIS RapidRail® Fixing Rail