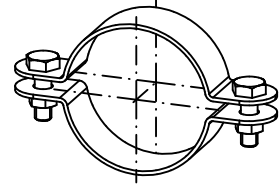


# IH100 / IH140 Split Band Clips

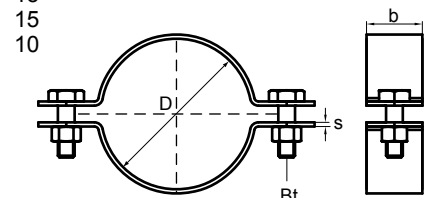
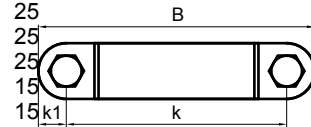
for steel, copper & insulated pipes



## Features and benefits

- Type IH100: zinc plated, for steel pipe
- Type IH140: nylon coated, for copper pipe
- also available in:
  - self colour
  - hot dip galvanized
  - stainless steel

Part No.	D (mm)	D (")	DN (mm)	Type	Bolt (")	B (mm)	b x s (mm)	k (mm)	k1 (mm)	Pack 1
B410 3 021	21	½	15	IH100	M6 x 25 mm	80	25 x 3,0	54	13	25
B410 3 027	27	¾	20	IH100	M6 x 25 mm	91	25 x 3,0	65	13	50
B410 3 034	34	1	25	IH100	M6 x 25 mm	94	25 x 3,0	68	13	50
B410 3 042	42	1¼	32	IH100	M10 x 30 mm	118	30 x 3,0	86	16	25
B410 3 048	48	1½	40	IH100	M10 x 30 mm	127	30 x 3,0	95	16	25
B410 3 060	60	2	50	IH100	M10 x 30 mm	146	30 x 3,0	114	16	25
B410 3 076	76	2½	65	IH100	M10 x 30 mm	156	40 x 3,0	116	20	15
B410 3 089	89	3	80	IH100	M10 x 30 mm	177	40 x 3,0	137	20	15
B410 3 114	114	4	100	IH100	M12 x 40 mm	216	40 x 3,0	176	20	15
B410 3 140	140	5	125	IH100	M12 x 40 mm	247	40 x 5,0	207	20	15
B410 3 168	168	6	150	IH100	M12 x 40 mm	266	40 x 5,0	226	20	10
B410 3 194	194	7	175	IH100	M16 x 50 mm	324	50 x 6,0	274	25	
B410 3 219	219		200	IH100	M16 x 50 mm	347	50 x 6,0	297	25	
B410 3 245	245	9	225	IH100	M16 x 50 mm	384	50 x 6,0	334	25	
B410 3 273	273	10	250	IH100	M16 x 50 mm	421	50 x 6,0	371	25	
B410 3 323	324	12	300	IH100	M20 x 80 mm	480	50 x 10,0	420	30	
B410 3 355	356	14	350	IH100	M24 x 100 mm	532	60 x 10,0	460	36	
B410 3 406	407	16	400	IH100	M24 x 100 mm	607	60 x 12,0	535	36	
B410 3 457	457	18	450	IH100	M30 x 110 mm	715	60 x 15,0	625	45	
B410 3 508	508	20	500	IH100	M30 x 110 mm	765	60 x 15,0	675	45	
B410 3 559	559	22	550	IH100	M30 x 110 mm	815	80 x 15,0	725	45	
B410 3 610	610	24	600	IH100	M30 x 110 mm	870	80 x 15,0	780	45	
B410 6 015	15	-	-	IH140	M6 x 25 mm	81	25 x 3,0	55	13	25
B410 6 022	22	-	-	IH140	M6 x 25 mm	81	25 x 3,0	55	13	25
B410 6 028	28	-	-	IH140	M6 x 25 mm	91	25 x 3,0	65	13	25
B410 6 035	35	-	-	IH140	M6 x 25 mm	94	25 x 3,0	68	13	25
B410 6 042	42	-	-	IH140	M10 x 30 mm	118	30 x 3,0	86	16	25
B410 6 054	54	-	-	IH140	M10 x 30 mm	149	30 x 3,0	117	16	25
B410 6 066	66	-	-	IH140	M10 x 30 mm	144	30 x 3,0	112	16	25
B410 6 076	76	-	-	IH140	M10 x 30 mm	156	40 x 3,0	116	20	15
B410 6 108	108	-	-	IH140	M12 x 40 mm	198	40 x 3,0	158	20	
B410 6 133	133	-	-	IH140	M12 x 40 mm	227	40 x 5,0	187	20	
B410 6 159	159	-	-	IH140	M12 x 40 mm	260	40 x 5,0	220	20	



Alternative  
 25 IH100 Stainless Steel Split Band  
 25 Clips GR316

15