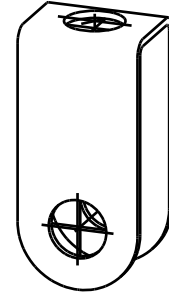


IH212 Link Eyes



Features and benefits

- standard finish:
 - pre-galvanized
 - zinc plated

Part No.	h (mm)	b x s (mm)	d1 (mm)	ST
B676 2 006	32	25 x 1,5	6	pre-galvanized
B676 2 010	40	25 x 1,5	10	pre-galvanized
B676 2 012	50	25 x 1,5	12	pre-galvanized
B676 3 016	60	50 x 3,0	16	zinc plated

