

SURFACE PATTERN CABLE TRUNKING

Product and Material Specification

Hot dipped galvanised sheet/coil steel
(i.e. **Pre-galvanised**)

BS EN10142: 1991
Formerly BS2989

Finish

Self coloured galvanised
Fe PO2G Z275NAC
Class 3 Heavy Protection BS4678
Part 1

Product Standards

British Standard
BS 4678 Part 1 1978

Quality Management System

ISO 9001 : 2000

Product Information

All surface pattern trunking supplied in 3 Metre lengths, complete with lid, connector and fixing screws.

Ordering Information

For **TWO EQUAL COMPARTMENTS**

Add suffix -2EC as listed opposite
Example ST62-2EC

For **THREE EQUAL COMPARTMENTS**

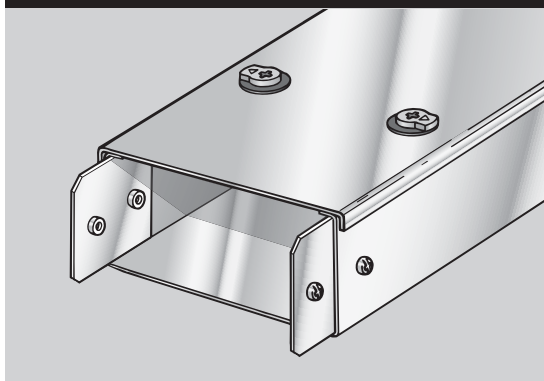
Add suffix -3EC or relevant amount of compartments required
Example ST63-4EC

*NOTE
25mm is minimum width of compartment

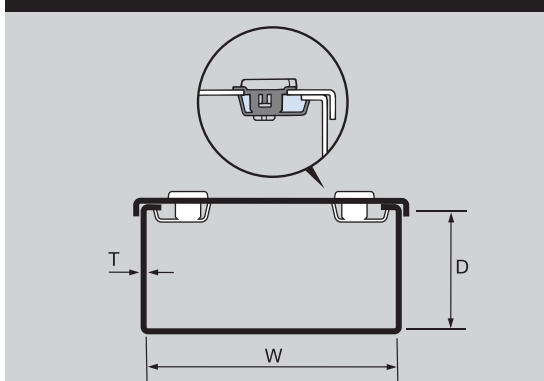
For **UNEQUAL COMPARTMENTS**

Add suffix -2UEC if two compartments required followed by the individual compartment widths.
Example ST62-3UEC 75/25/50

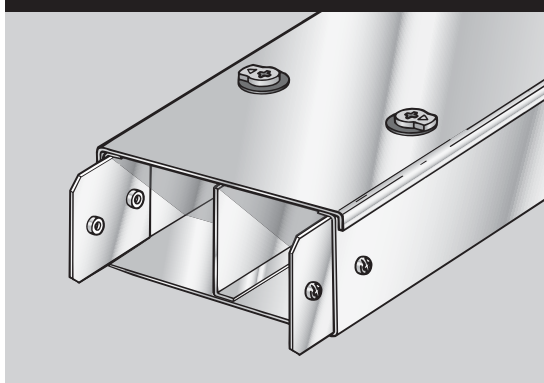
Speedlock Single Compartment



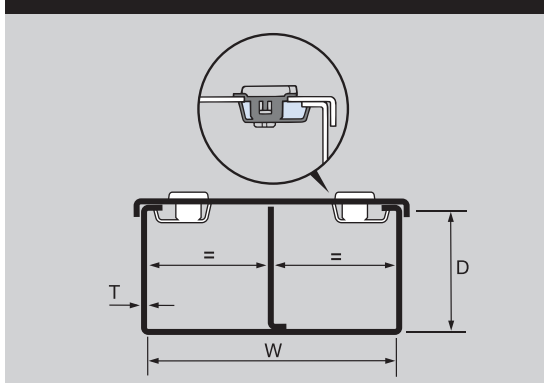
Speedlock - Details



Speedlock Multi-Compartment



Speedlock Multi-Compartment - Details



W mm	D mm	T mm	Weight Kgs/Mtr	Catalogue Reference
50	50	0.8	1.6	ST22
75	50	1.0	2.1	ST32
100	50	1.0	2.6	ST42
150	50	1.0	2.8	ST62
225	50	1.2	5.6	ST92
300	50	1.2	7.0	ST122
75	75	1.0	2.4	ST33
100	75	1.0	2.8	ST43
150	75	1.2	4.5	ST63
225	75	1.2	6.1	ST93
100	100	1.2	3.9	ST44
150	100	1.2	5.0	ST64
150	150	1.2	5.9	ST66

FOR OTHER SIZES PLEASE REFER TO SCREW FIX (PAGE 3)

W mm	D mm	T mm	Weight Kgs/Mtr	Catalogue Reference
50	50	0.8	1.6	ST22-2EC
75	50	1.0	2.4	ST32-2EC
100	50	1.0	2.8	ST42-2EC
150	50	1.0	3.8	ST62-2EC
225	50	1.2	5.9	ST92-2EC
300	50	1.2	7.4	ST122-2EC
75	75	1.0	2.8	ST33-2EC
100	75	1.0	3.1	ST43-2EC
150	75	1.2	5.0	ST63-2EC
225	75	1.2	6.6	ST93-2EC
100	100	1.2	4.6	ST44-2EC
150	100	1.2	5.7	ST64-2EC
150	150	1.2	6.9	ST66-2EC

FOR OTHER SIZES PLEASE REFER TO SCREW FIX (PAGE 3)