

“C” SLEEVE CONNECTORS
Tin plated version and bright surface version


Description:

- “C” connectors are manufactured from high purity copper profiles Cu-ETP (CW004A) conform to EN 13605 and are suitable for a variety of uses either to create an earthing network or tapping off from overhead distribution lines.
- The tin plated version is electrolytically tin plated with a minimum thickness of 3µm to avoid oxidation.

Each connector is marked as follows:

- Cembre trade mark
- Reference number
- Conductor size-Run
- Conductor size-Tap
- Number of crimps
- Die reference.

Markings:


- **Conform to low voltage directive 2006/95/CE and to product norms EN 61238-1, ESI 43-92 Issue 2, BS 3288 : Part. I**



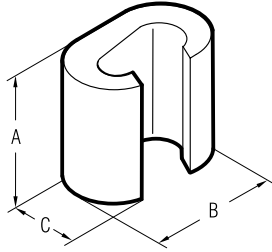
- **Accepted by USDA (United States Department of Agriculture) Rural Development, according to ANSI C 119.4**

Cembre SpA

Via Serenissima, 9 - 25135 Brescia (Italy)
 Tel.: +39 030 36921 - Telefax: +39 030 3365766
 www.cembre.com - E-mail: info@cembre.com

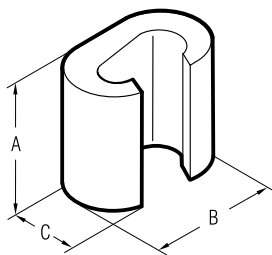
“C” SLEEVE CONNECTORS Tin plated version

Sections and Dimensions:



Conductor Size sqmm		Ref.	Dimensions mm		
Run	Tap		A	B	C
6÷2,5	6÷1,5	C 6-C 6 ST	9,0	9,8	6,4
10	10÷1,5	C 10-C 10 ST	12,0	12,6	8,4
16	16÷1,5	C 16-C 16 ST	17,0	19,4	12,0
25÷16	10÷1,5	C 25-C 10 ST	17,0	19,8	13,0
25	25÷16	C 25-C 25 ST	17,0	21,4	13,0
40÷35	16÷1,5	C 35-C 16 ST	21,0	24,6	15,4
40÷35	40÷25	C 35-C 35 ST	21,0	26,6	15,6
50	25÷10	C 50-C 25 ST	25,0	32,9	21,0
50	50÷35	C 50-C 50 ST	26,0	33,0	21,0
70÷63	25÷1,5	C 70-C 25 N ST	21,0	26,4	17,5
70÷50	40÷4	C 70-C 35 ST	28,0	33,0	21,0
70÷50	70÷35	C 70-C 70 ST	28,0	34,0	21,0
100÷95	40÷4	C 95-C 35 ST	29,0	40,6	26,0
100÷95	70÷40	C 95-C 70 ST	29,0	41,0	26,0
100÷95	100÷63	C 95-C 95 ST	29,0	41,0	26,0
125÷110	125÷25	C 120-C 120 ST	30,0	45,0	28,0
160÷150	125÷25	C 150-C 120 ST	31,0	45,0	28,0
150	150÷63	C 150-C 150 ST	30,0	45,0	28,0
185	100÷16	C 185-C 95 ST	31,0	45,0	28,0
185÷120	185÷120	C 185-C 185 ST	22,6	68,0	34,0
240÷150	120÷95	C 240-C 120 ST	22,6	68,0	34,0

“C” SLEEVE CONNECTORS bright surface version



Conductor Size sqmm		Ref.	Dimensions mm		
Run	Tap		A	B	C
6÷2,5	6÷1,5	C 6-C 6	9,0	9,8	6,4
10	10÷1,5	C 10-C 10	12,0	12,6	8,4
16	16÷1,5	C 16-C 16	17,0	19,4	12,0
25÷16	10÷1,5	C 25-C 10	17,0	19,8	13,0
25	25÷16	C 25-C 25	17,0	21,4	13,0
40÷35	16÷1,5	C 35-C 16	21,0	24,6	15,4
40÷35	40÷25	C 35-C 35	21,0	26,6	15,6
50	25÷10	C 50-C 25	25,0	32,9	21,0
50	50÷35	C 50-C 50	26,0	33,0	21,0
70÷63	25÷1,5	C 70-C 25 N	21,0	26,4	17,5
70÷50	40÷4	C 70-C 35	28,0	33,0	21,0
70÷50	70÷35	C 70-C 70	28,0	34,0	21,0
100÷95	40÷4	C 95-C 35	29,0	40,6	26,0
100÷95	70÷40	C 95-C 70	29,0	41,0	26,0
100÷95	100÷63	C 95-C 95	29,0	41,0	26,0
125÷110	125÷25	C 120-C 120	30,0	45,0	28,0
160÷150	125÷25	C 150-C 120	31,0	45,0	28,0
150	150÷63	C 150-C 150	30,0	45,0	28,0
185	100÷16	C 185-C 95	31,0	45,0	28,0
185÷120	185÷120	C 185-C 185	22,6	68,0	34,0
240÷150	120÷95	C 240-C 120	22,6	68,0	34,0

Cembre SpA

Via Serenissima, 9 - 25135 Brescia (Italy)

Tel.: +39 030 36921 - Telefax: +39 030 3365766

www.cembre.com - E-mail: info@cembre.com